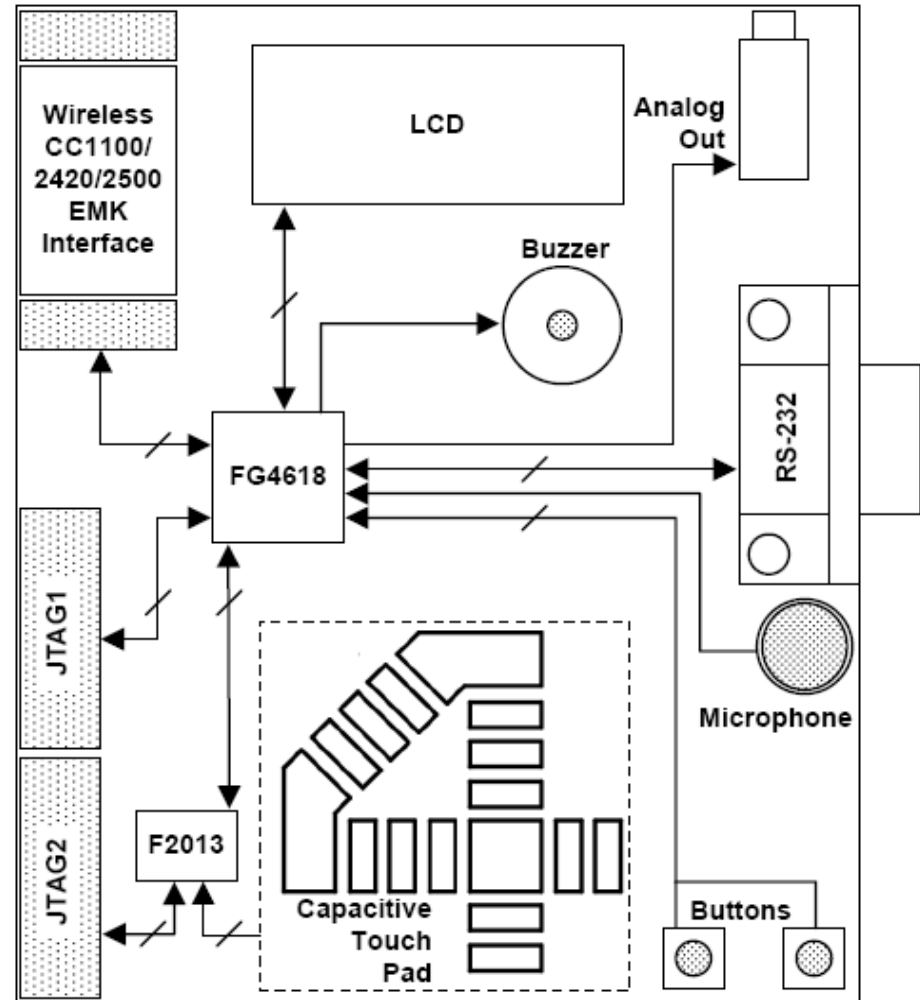
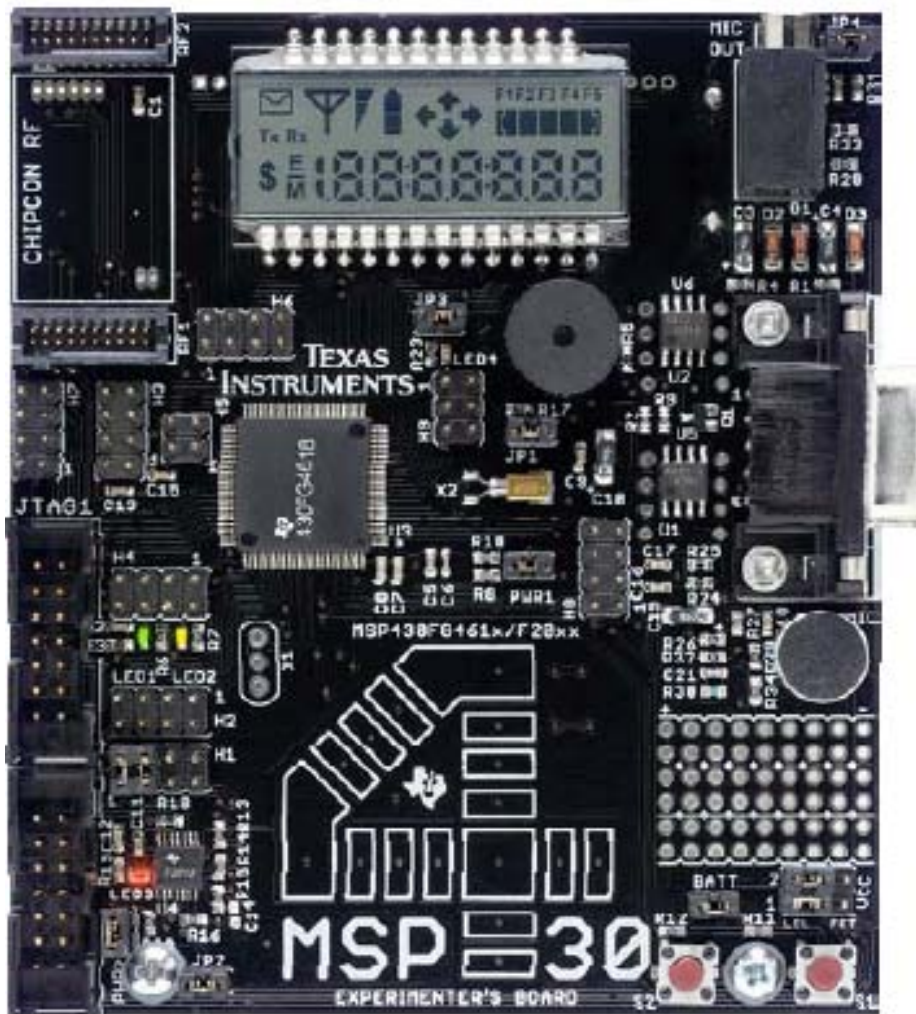


MSP 430 Experimenters Board Schematics



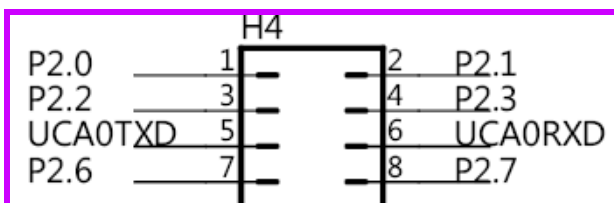
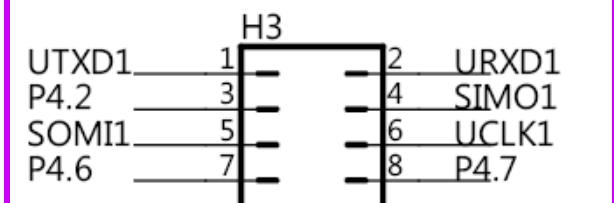
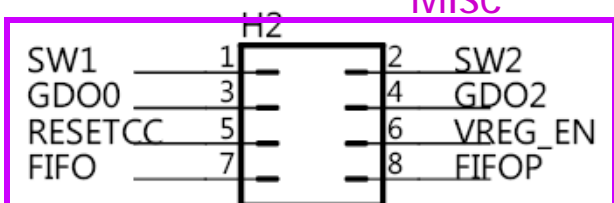
Breakdown of the Experimenters Board showing location and schematics of major elements including F2013, FG4618, LCD, Headers, Power Supply, Wireless Interface, LEDs, Audio Chain, Buzzer, RS232, Breadboard area, etc.

Experimenters Board



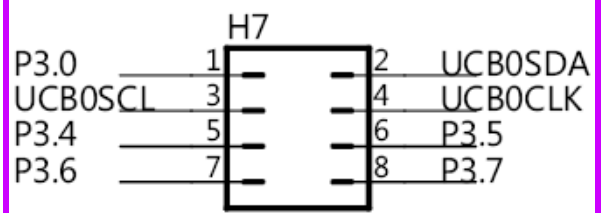
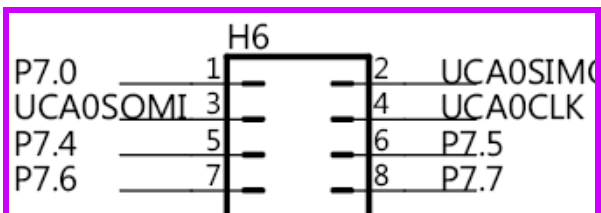
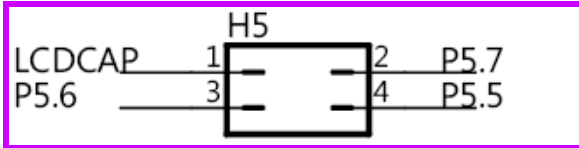
Pin Access via Headers

Misc



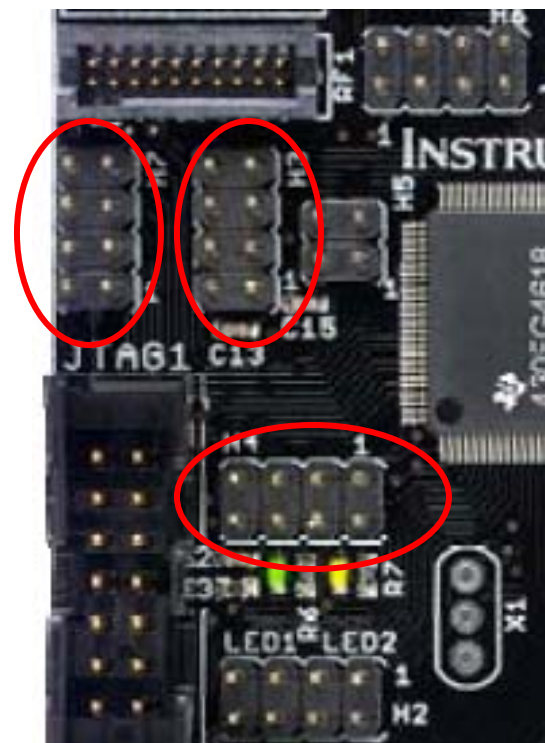
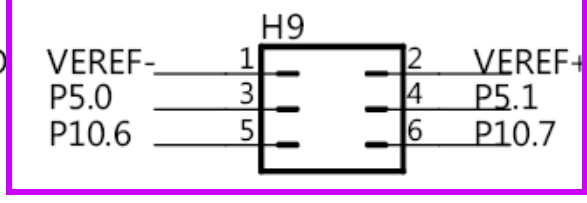
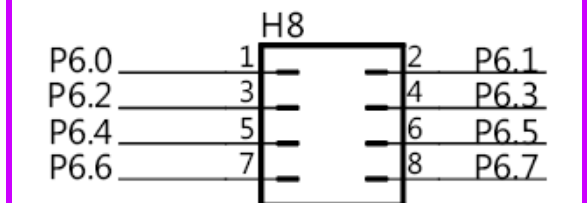
Capture, D I/O

LCD



Serial, LCD, Capture, D I/O

ADC

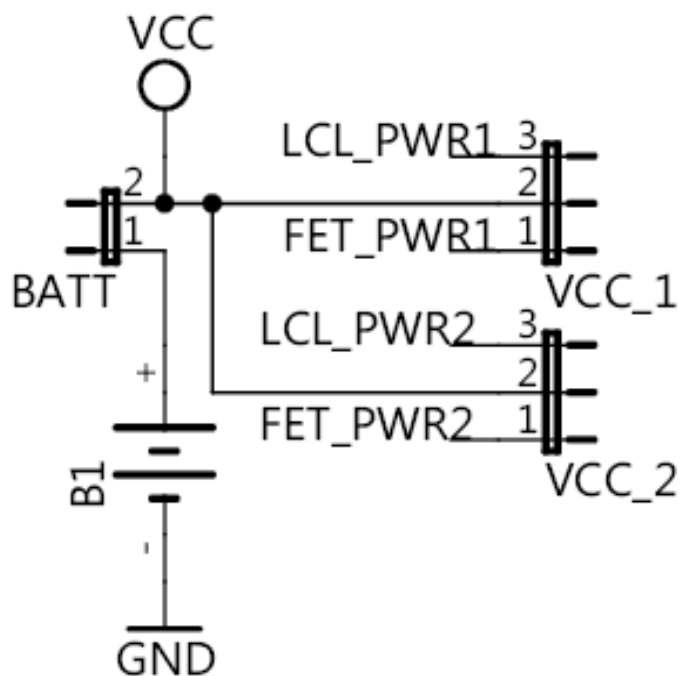


This is your access to the external world for all analog and digital signals excluding features supported elsewhere, such as audio and RS232.

Ports are on FG4618

Power Supply Configuration

Power Supply Configuration



VCC_1: FG4618 Supply Config
VCC_2: F2013 Supply Config

Pos 1-2: FET Powered
Pos 2-3: Battery Powered

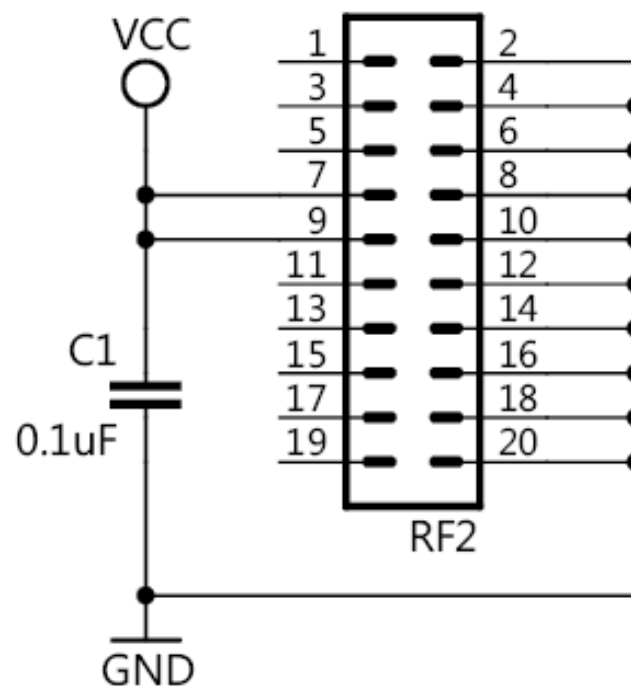
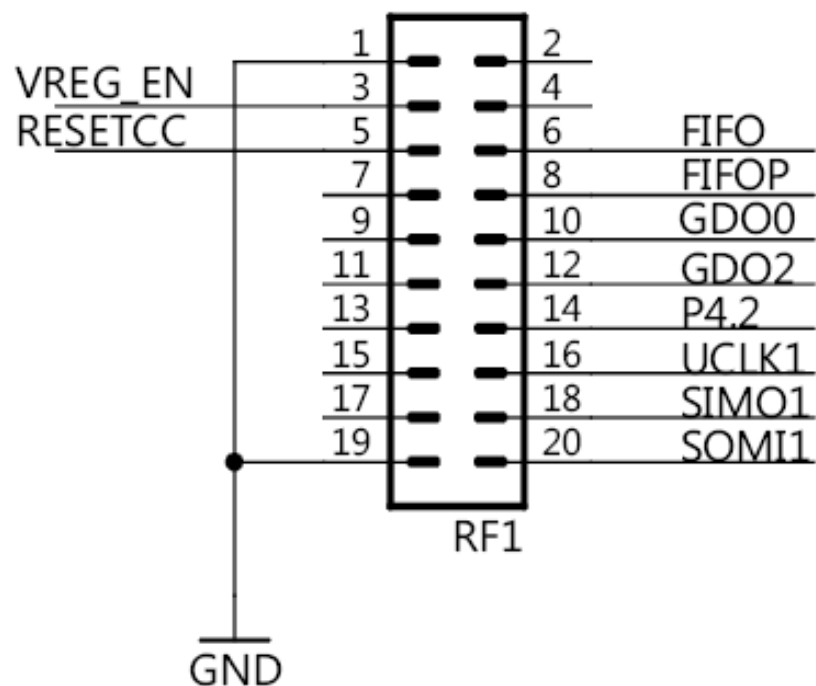


For our class, we are NOT using the battery, but using the FET to power the board.

BATT jumper is off, and VCC 1 and 2 are in the right position for FET

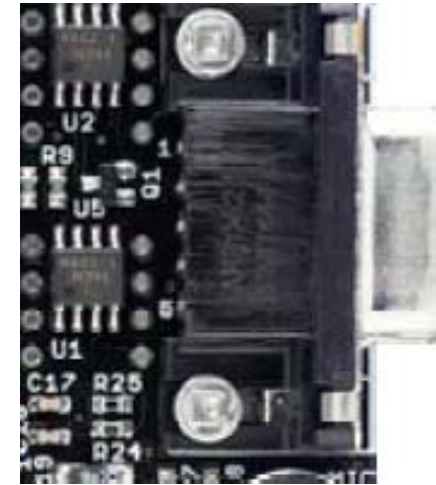
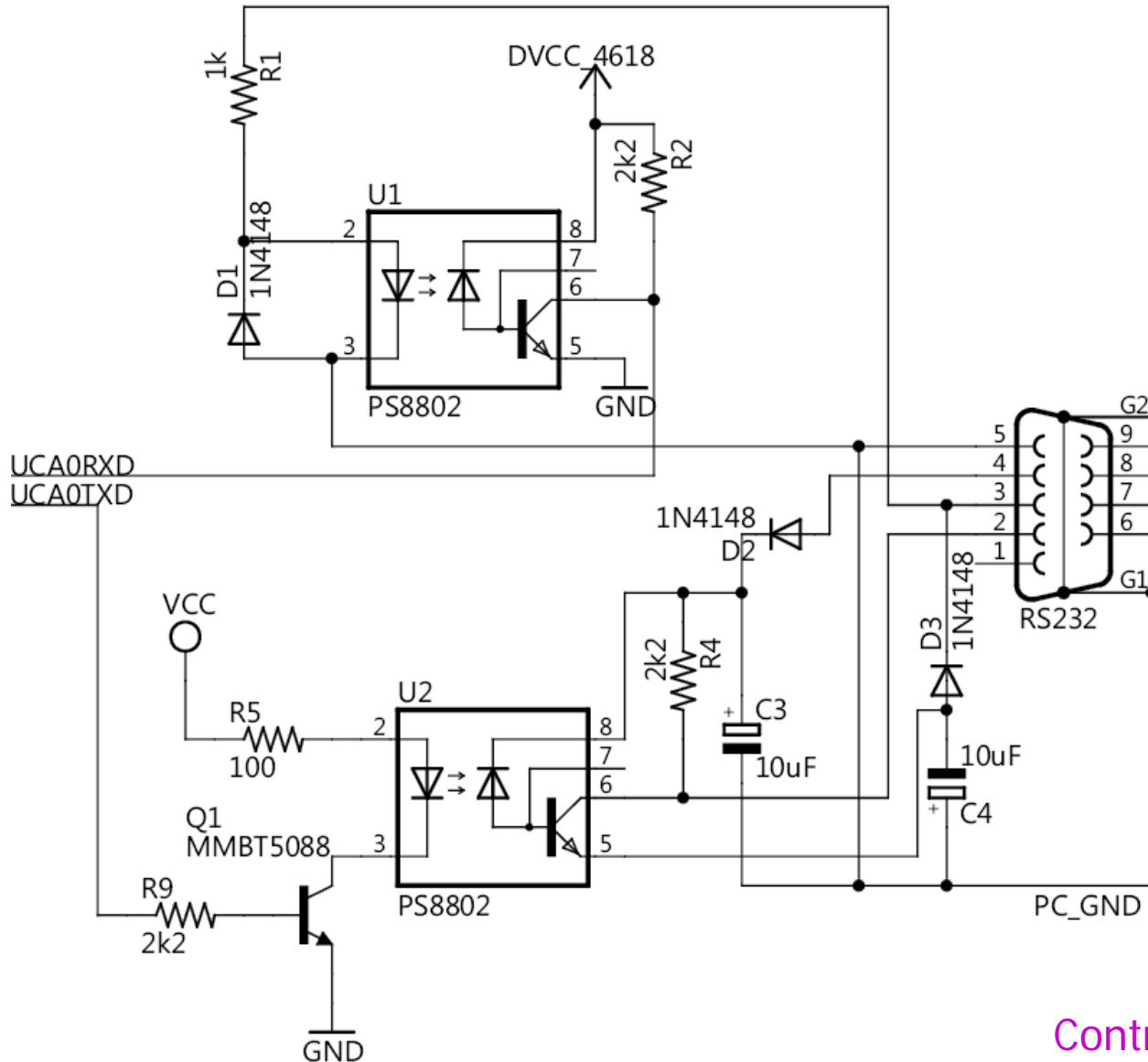
Chipcon Wireless RF Card

RF Daughter Card Connect



RS-232 Communications

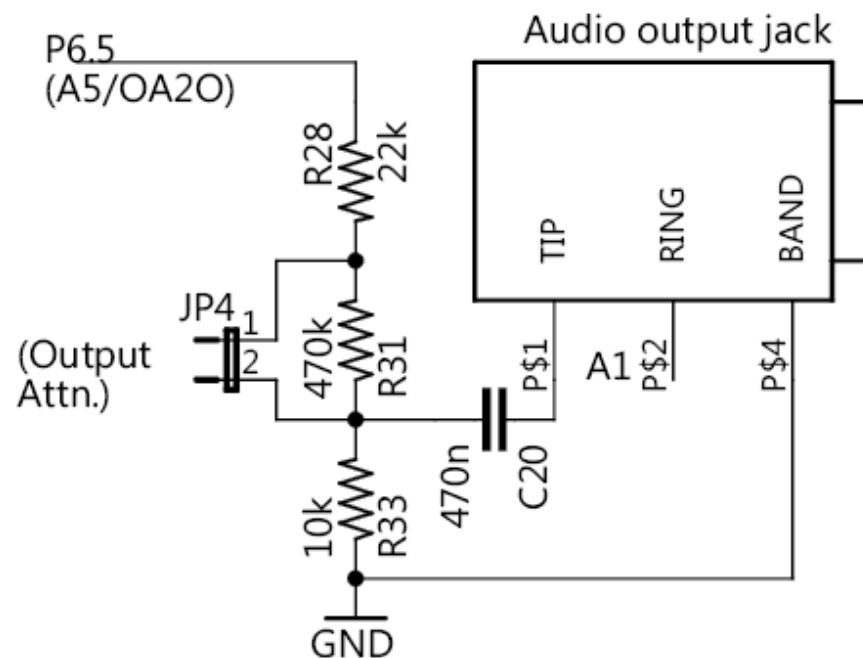
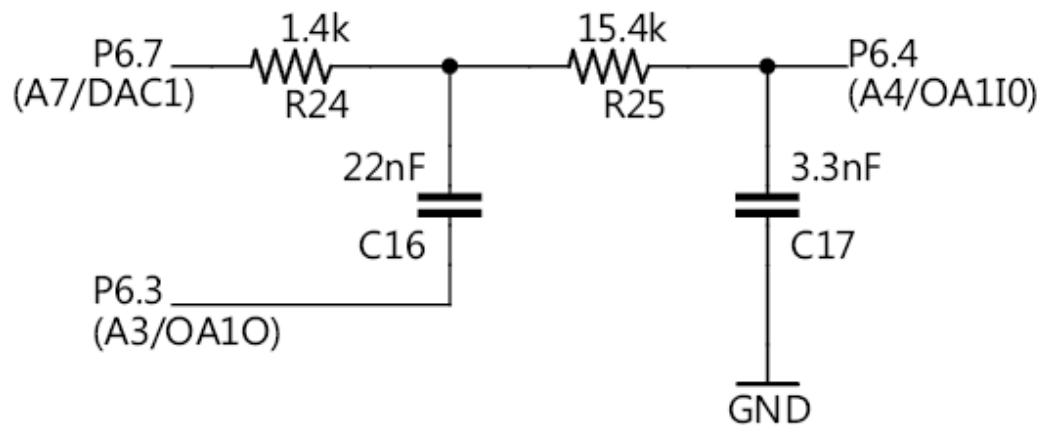
Isolated RS232 Communication



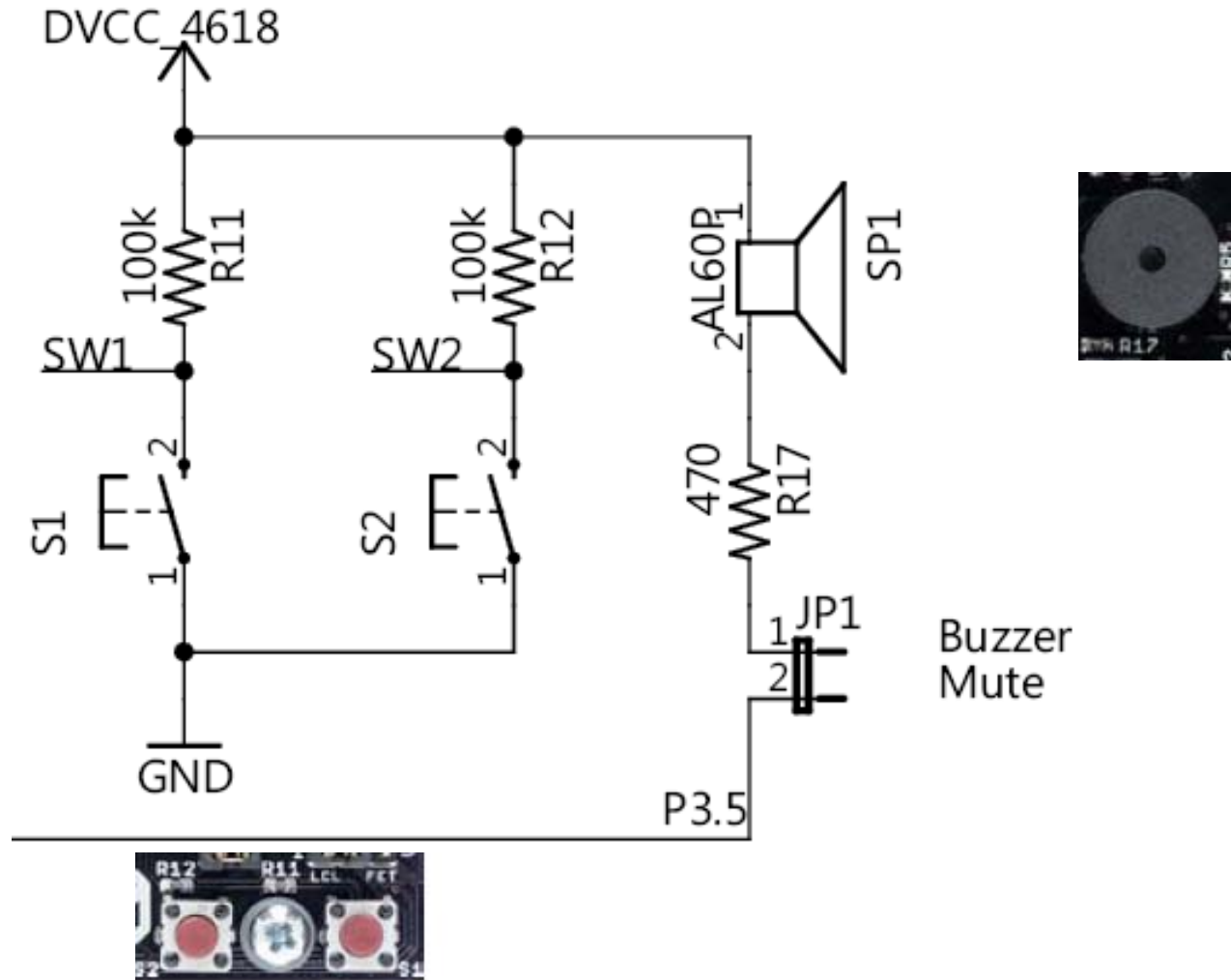
Controlled by FG4618

Audio Chain

Sallen-Key 2nd Order OA1 Active LPF

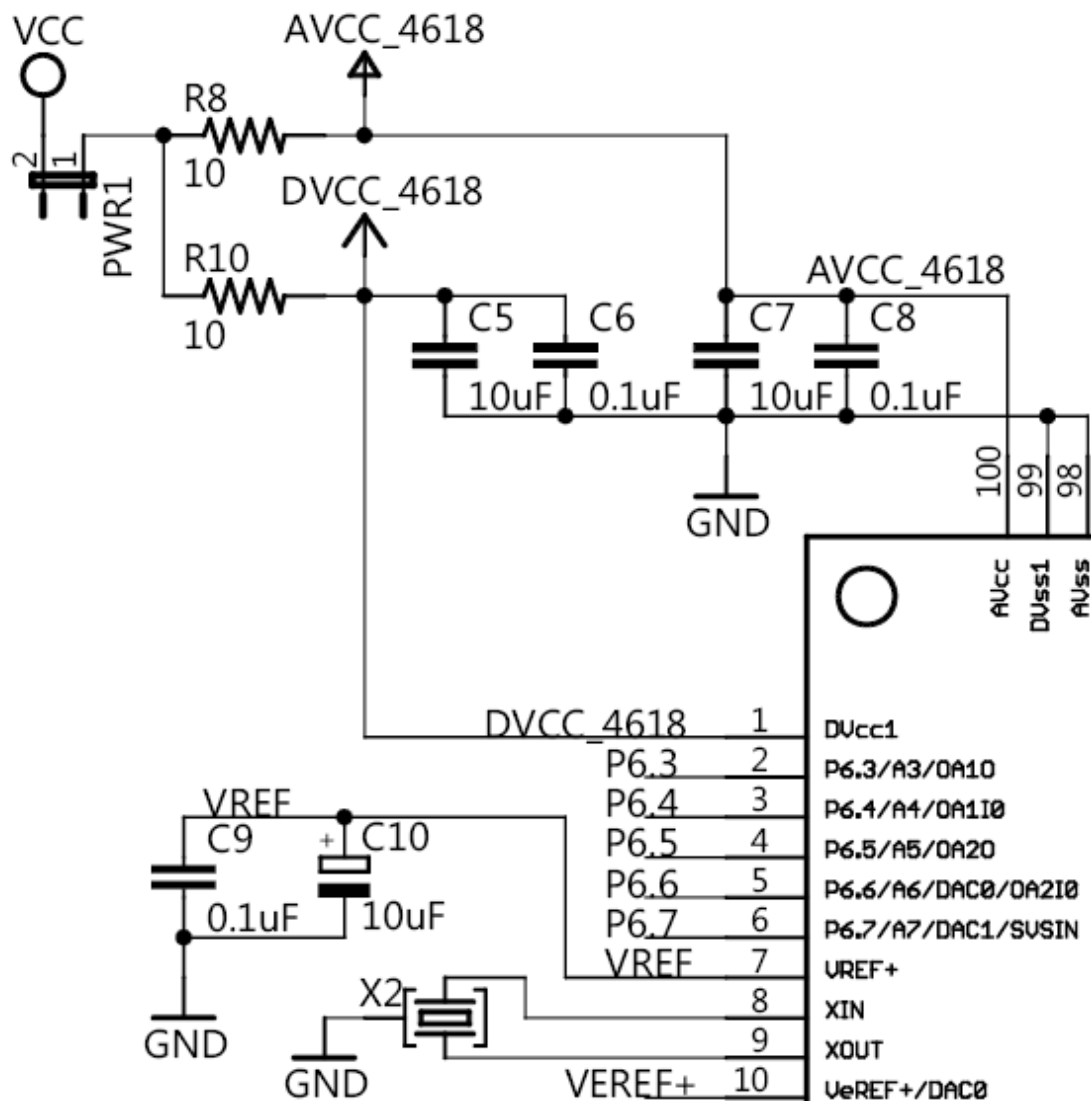


Buzzer and Switches



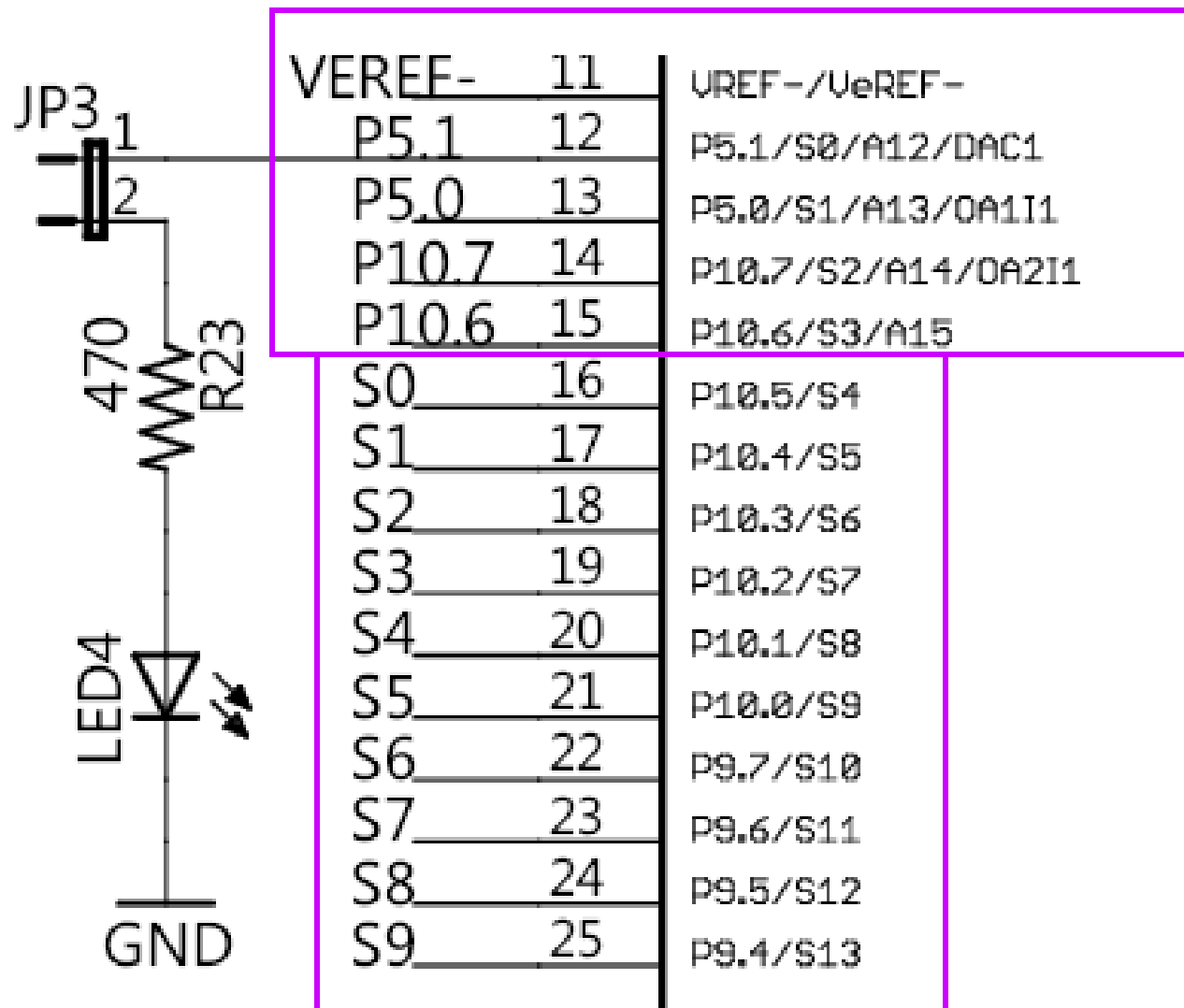
Controlled by FG4618

Voltages for FG4618



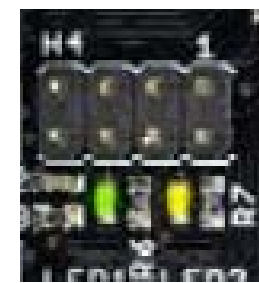
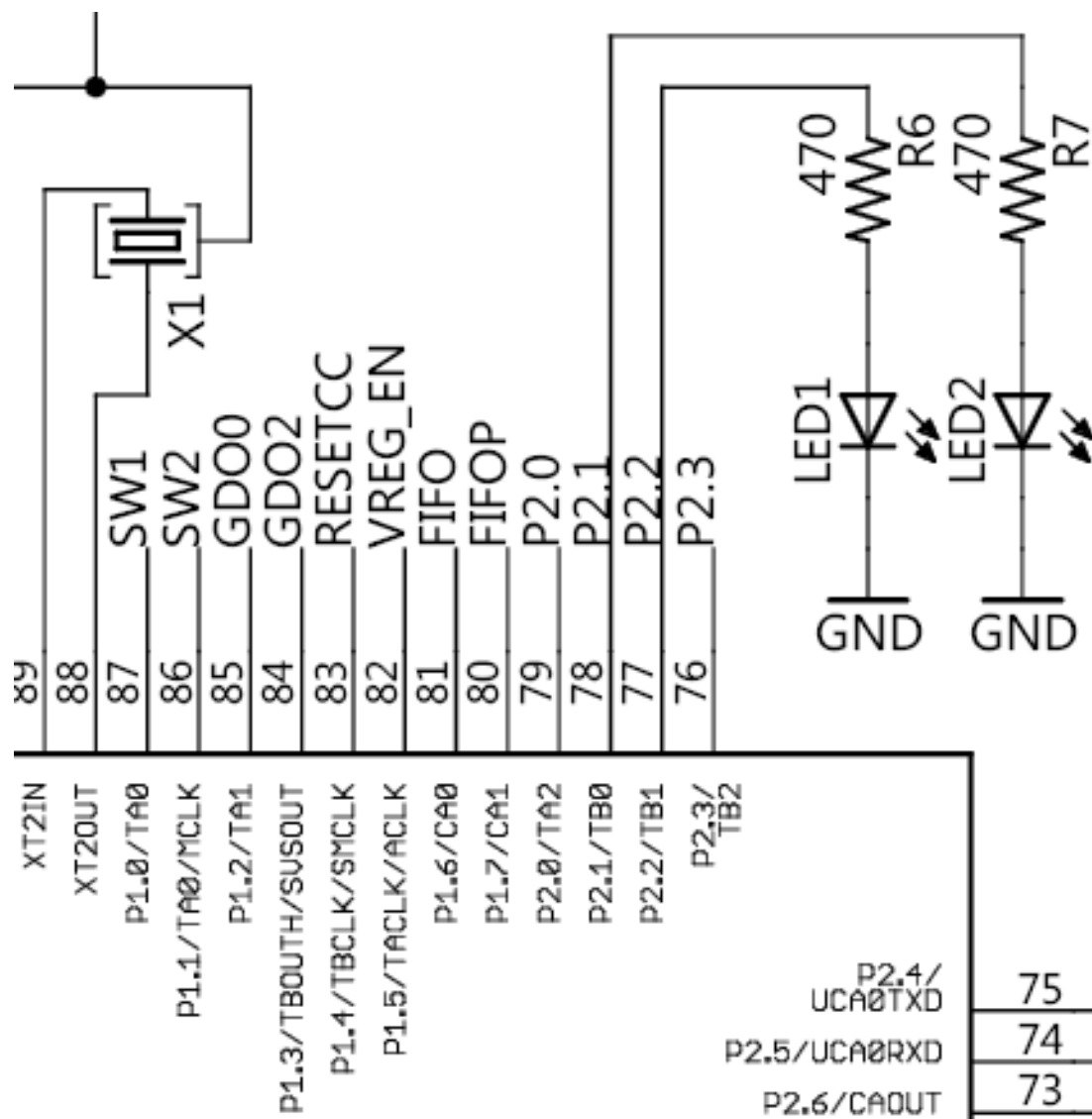
Misc Ports FG4618

GPIO or ADC

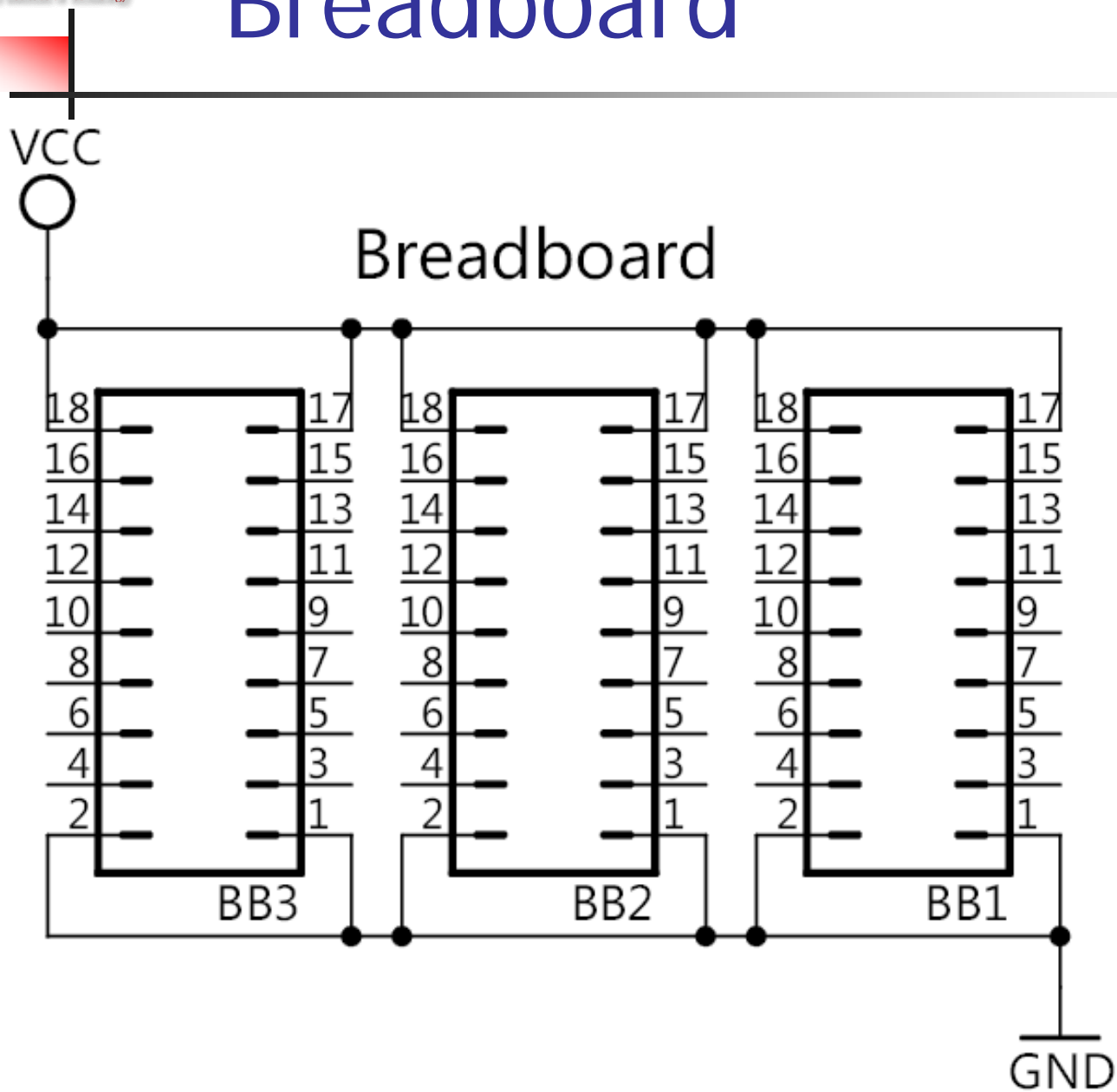


IO w/Schmitt trigger or LCD

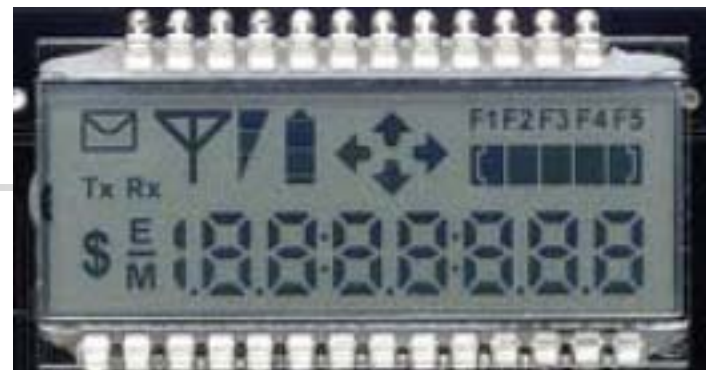
LEDs and Misc Ports FG4618



Breadboard



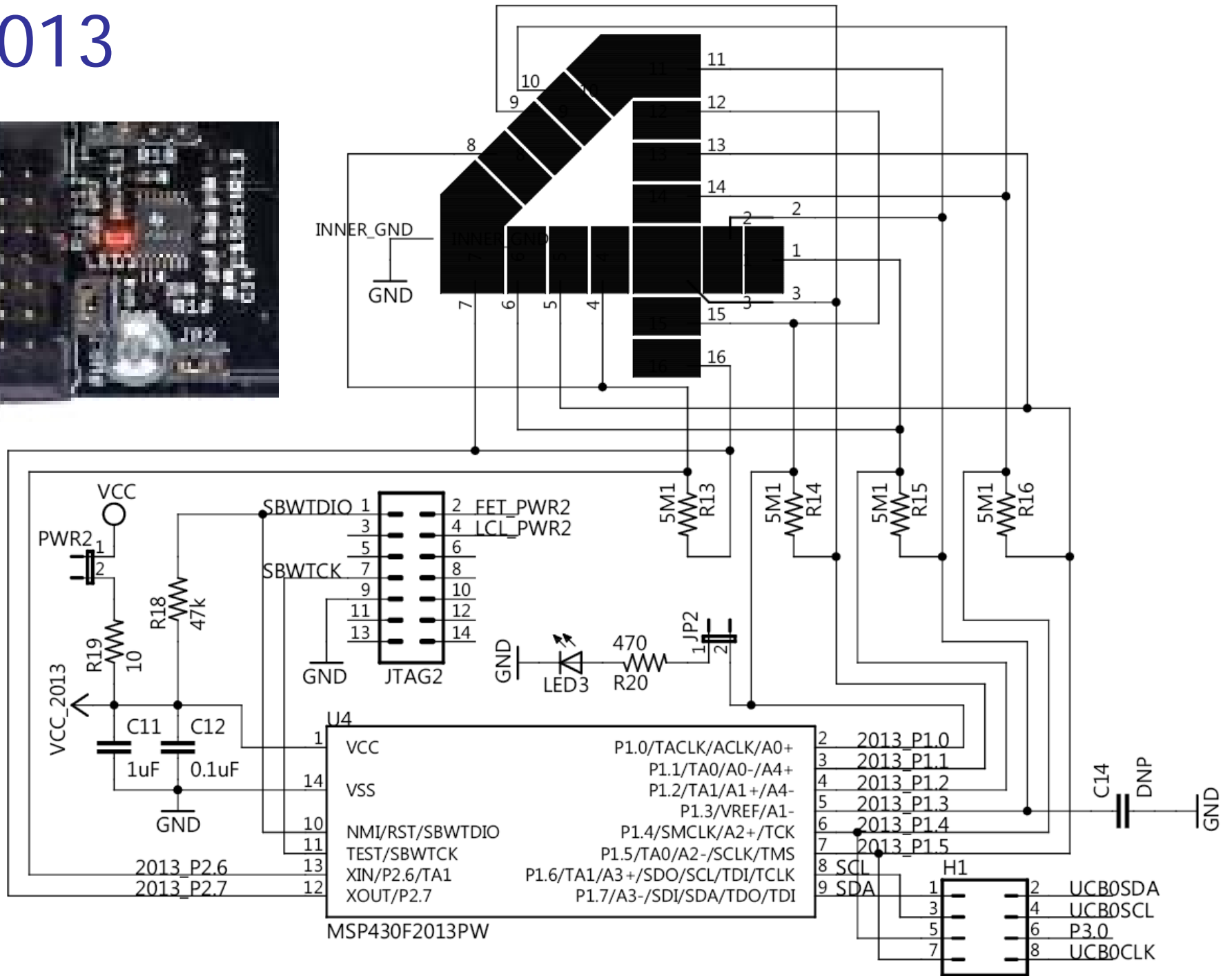
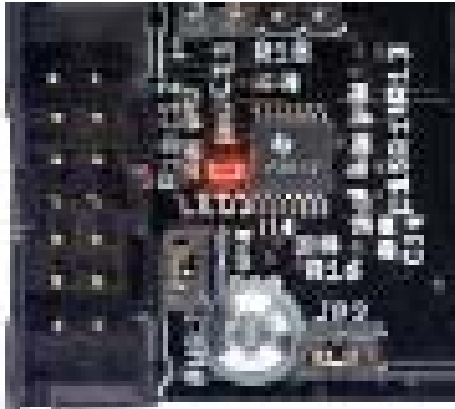
LCD



SoftBaugh SBLCDA4

S0	P\$14	1A_1B_1C_1D			
S1	P\$13	1F_1G_1E_DP1	DOL_ERR_MINUS_MEM	P\$26	S21
S2	P\$12	2A_2B_2C_2D	ENV_TX_RX_8BC	P\$25	S20
S3	P\$11	2F_2G_2E_DP2	ANT_A2_A1_A0	P\$24	S19
S4	P\$10	3A_3B_3C_3D	BT_B1_B0_BB	P\$23	S18
S5	P\$9	3F_3G_3E_COL3	AU_AR_AD_AL	P\$22	S17
S6	P\$8	4A_4B_4C_4D	PL_P0_P1_P2	P\$21	S16
S7	P\$7	4F_4G_4E_DP4	F1_F2_F3_F4	P\$20	S15
S8	P\$6	5A_5B_5C_5D	F5_PR_P4_P3	P\$19	S14
S9	P\$5	5F_5G_5E_COL5	COM0	P\$18	COM0
S10	P\$4	6A_6B_6C_6D	COM1	P\$17	COM1
S11	P\$3	6F_6G_6E_DP6	COM2	P\$16	COM2
S12	P\$2	7A_7B_7C_7D	COM3	P\$15	COM3
S13	P\$1	7F_7G_7E_DP7			

F2013



F2013

